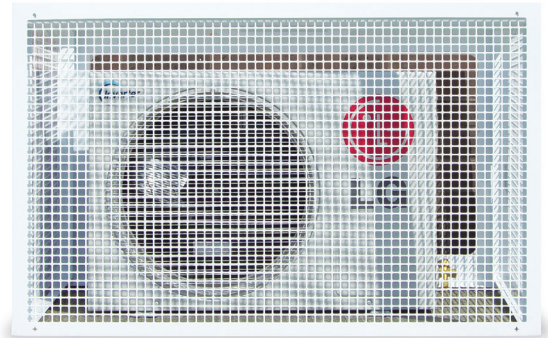




rapid fit guard



Rapid Fit Guards deter vandalism and prevent damage to valuable equipment whilst still quick to install.

KEY FEATURES

- Simple and easy to install tab and slot design allows panels to connect
- Panels are removable to allow maintenance of the unit
- Includes 3 x tamper resistant screws
- Adjustable feet to allow services at ground level
- Bottom panels and drip trays available for guard fixed at high level on wall

SPECIFICATIONS

Materials of construction

Zinc passivated steel with powder coating (ivory)



Have you considered your unit mounting options...
Big Foot Systems

'Fix-it Foot', available in various sizes up to 1m.



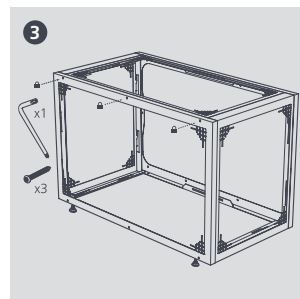
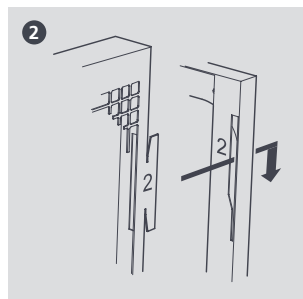
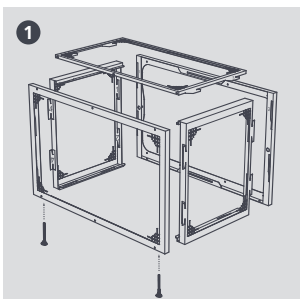
SIZING OPTIONS

Size	Weight	Ext. Height (mm)	Ext. Width (mm)	Ext. Depth (mm)	Int. Height (mm)	Int. Width (mm)	Int. Depth (mm)	Part No.
Small	21kg	660	1052	572	600	900	500	B9163
Medium	29kg	1060	1152	572	1000	1000	500	B9164
Large	39kg	1360	1152	572	1300	1000	500	B9165

Bottom Panel – Small Guard: B9252
Bottom Panel – Medium/Large Guard: B9255



For further details please refer to our website aspenpumps.com/xtra



Information correct at time of going to press.