



CONDENSER
SUPPORT

NEW

Wall Support Bracket



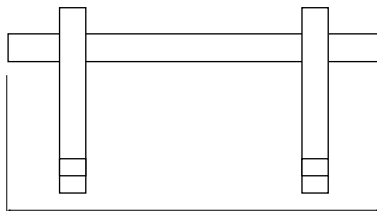
KEY FEATURES

- 4 sizes to cover all applications (60kg, 90kg, 140kg & 250kg)
- Integrated spirit level provided (not B2093)
- Adjustable unit fixing feet positions (not B2093)
- Preassembled arms
- Arm levelling fixing bolt provided
- RAL9002 colour
- Wall fixing kit included
- Unit fixing feet kit provided
- Made from Galvanised Steel (15/10, 18/10 & 20/10)
- Polyester powder coated finish (approx 100µm thickness)
- M8 8.8 zinc passivated carbon steel high strength fixings included

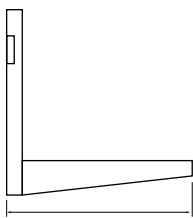
SPECIFICATIONS

Materials of construction

Polyester powder coated galvanised steel construction



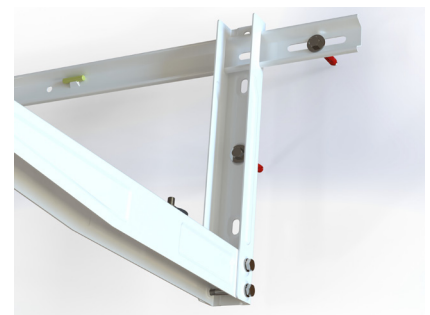
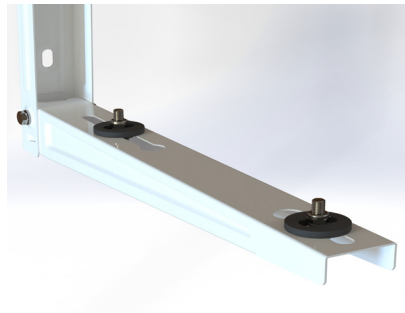
800mm



465/550/600mm

SIZING OPTIONS

Description	Max. Load	Working Load (kg)	Crossbar (mm)	Upright (mm)	Support Arm Length (mm)	Support Arm Depth (mm)	Available Support Arm Depth (mm)	Part No.
Wall Support Bracket 60kg	60kg	160kg	800	375	465	36	420	B2090
Wall Support Bracket 90kg	90kg	160kg	800	375	550	36	510	B2091
Wall Support Bracket 140kg	140kg	160kg	1000	400	600	44	560	B2092
Wall Support Bracket 250kg	250kg	300kg	960	400	640	45	595	B2093



Information correct at time of going to press.