



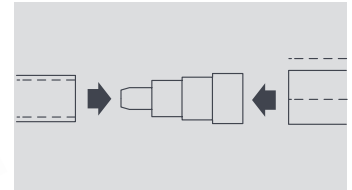
CONDENSATE  
MANAGEMENT



# Tube & Connector Fittings

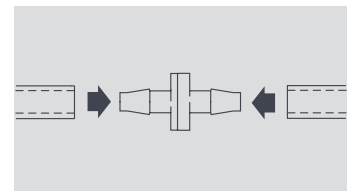
## Adaptors / Straight Connectors

SIZING OPTIONS			
Size	Ideal Use	Part No.	Pack Qty
6 mm – 10 mm	Reduction of 6 mm (1/4") on 10 mm (3/8")	FP2020	5
6 mm, 10 mm, to 12 mm to 16 mm	1/4" to 3/8" to 5/8" to 1/2" for peristaltic pumps	FP2632	5



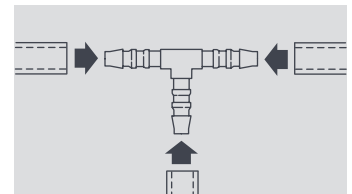
## Non-return Valves

SIZING OPTIONS			
Size	Ideal Use	Part No.	Pack Qty
6 mm (1/4")	Prevents backflow of water	FP2628	5
10 mm (3/8")	Prevents backflow of water	FP2630	5



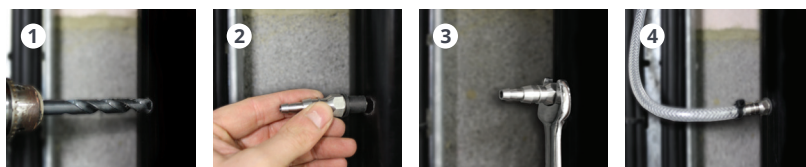
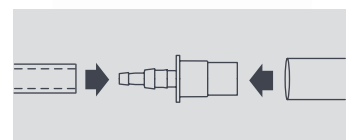
## Hose to Hose

SIZING OPTIONS			
Size	Ideal Use	Part No.	Pack Qty
6 mm (1/4")	Equal "T" Connector	FP2024	5
6 mm (1/4")	Elbow Connector	FP2028	5
6 mm (1/4")	Straight Connector	FP2622	5
10 mm (3/8")	Equal "T" Connector	FP2030	5
10 mm (3/8")	Elbow Connector	FP2032	5
10 mm (3/8")	Straight Connector	FP2624	5
19/16 mm	Blue straight connector	209DV00012	50
16 mm	Blue Y Connector	209DV00017	10
16 mm	Blue Equal "T" Connector	209DV00018	10
16 mm	Blue Elbow Connector	209DV00019	10
16 mm	Blue Straight Connector	209DV00020	10



## Hose to Overflow or Waste / Soil Pipe

SIZING OPTIONS			
Size	Ideal Use	Part No.	Pack Qty
6 mm (1/4") to 10 mm (3/8") – overflow pipe 21 mm	Hose to Overflow	FP2040	3
6 mm (1/4") to 10 mm (3/8") – self sealing adaptor	Hose to Waste / Soil Pipe (Drill hole to 11.5mm diameter)	FP2038	3



Note: All connectors should be fitted with the relevant cable ties

For further details please refer to our website [aspenpumps.com](http://aspenpumps.com)

Information correct at time of going to press. Not all products are available in all regions.