

EN

Pump Accessories

Peristaltic Pumps

SPARE HEAD TUBE KIT

 Part No.
FP1282

(Bag of 1)



ROTOR ASSEMBLY

 Part No.
SA1382


SILICON GREASE 100g

 Part No.
2457


FRONT HOUSING

 Part No.
1159


BACK PLATE

 Part No.
SA1161


PUMP BRACKET

 Part No.
2716
(Universal/Standard)

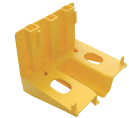

2m STANDARD PLUG-IN CABLE

 Part No.
1523/1


3m UNIVERSAL PLUG-IN CABLE

 Part No.
1573/1


PUMP BRACKET

 Part No.
1553/1
(Mechanical/MK4)


Mini Pumps

4.3m MINI ORANGE CABLE EXT. KIT

 Part No.
FP2940


MINI BLANC IVORY COVER

 Part No.
FP1037


MINI LIME INLET HOSE LENGTH

 Part No.
2472 (1m) / 2419 (25m)
(14mm I/D and 19mm O/D)


DRAIN TRAY CONNECTOR 16mm

 Part No.
FP2626

(Reservoir connector, 18,16 and 14mm pipe fitting)



INLINE FILTER 3/8" / 10mm

 Part No.
FP2638

(bag of 3)



1 AMP FUSE AND HOLDER

 Part No.
FP2620
(Bag of 2)


INLINE FILTER 1/4" / 6mm

 Part No.
FP2636

(bag of 3)



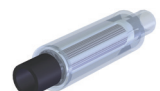
INLINE FILTER MICRO-V i⁴

 Part No.
FP2647

(bag of 3)



INLINE FILTER 16mm

 Part No.
FP2640
(bag of 3)


Cleaning and General

ACID NEUTRALISER

 Part No.
FP1021

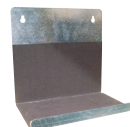
(box of 1. more information on page 81)



TANK PUMP BRACKET

 Part No.
SA1115

(Hi-flow, Hi-lift)


 For further details please refer to our website aspenspumps.com

Information correct at time of going to press.