



UNILITE[®]



unilite-USA.com



PAC MC

VETO PRO PAC®
TOOL BAGS THAT WORK
TECH SERIES
SPECIAL OPS

WHY CHOOSE UNILITE?

Best-in-class lighting solutions for professionals. At Unilite, we prioritize quality, utilizing premium materials and rigorous testing to ensure durability. Our cutting-edge technology, including advanced LED and power management systems, enhances performance and energy efficiency. With an extensive product range, we have the perfect lighting solution for any task. Durability is key, we integrate features like impact resistance and waterproofing and built from the toughest materials, making them perfect for industry. Combining an incredible product, with unbeatable customer service and a dedicated fan base, that's why you should choose Unilite.

INSPECTION LIGHTS

IL-425R	Folding Inspection Light	4
IL-925R	Folding Inspection Light	5
PL-3	Inspection Penlight	6

WORK LIGHTS

K-550	Compact Mini Work Light	7
SLR-1450	Compact Rotating Work Light	8
SLR-1750	Work Light with Powerbank	9

SITE LIGHTS

SLR-5500	Rechargeable Site Light	10
MTB-5300	Multi Battery 'Hybrid' Site Light	11

HEADTORCHES

PS-HDL2	Helmet Headtorch	12
HL-4R	USB Helmet Headtorch	13
HL-8R	Dual Beam Sensor Headtorch	14
NL-350R	Rechargeable Neck Light	15

FLASHLIGHTS

FR-400	Right Angle Flashlight	16
FR-1200	Right Angle Dual Power Flashlight	17
F-1400	Dual Power Aluminum Flashlight	18
F-2700	USB Aluminum Flashlight	19

CONTENTS

INTRINSICALLY SAFE TORCHES

ATEX-FL4	Zone 0 Flashlight	20
ATEX-RA2	Zone 0 Right Angle Torch	21
ATEX-H2	Zone 0 Headtorch	22

SCISSORS & KNIVES

ES-6	Heavy Duty 6" Electricians Scissors	23
FK3	Heavy Duty Folding Utility Knife	24
EK4	Heavy Duty Folding Utility Knife	25

TAPE MEASURES

MT5M2	Heavy Duty 5m Tape Measure	26
--------------	----------------------------	----

SAFETY GLOVES

UG-12C4	Impact & Cut Resistant Gloves	27
----------------	-------------------------------	----

SAFETY GLASSES

SG-Y10	Safety Glasses - Indoor/Outdoor	28
SG-YFG	Safety Glasses - Foam Gasket	29
SG-YCB	Safety Glasses - Blue Light	30
SG-YDS	Safety Glasses - Dark Smoke	31



INSPECTION LIGHTS



IL-425R | FOLDING INSPECTION LIGHT

- 425 lumen white COB LED, 6500k
- Secondary rear 150 lumen white SMD LED, 6500k
- Extra top torch - 80 lumen SMD LED, 6500k
- Ultra lightweight compact pocket size
- 180° vertical folding head
- Super tough aluminum & nylon construction
- Useful pocket clip
- Super strong magnetic base
- IK07 shock resistant - 6.5ft/2m drop resistant
- High quality 1100mAh li-ion battery
- Low battery 3x warning flash - reminds when charging is needed
- Quick 1A USB-C charging - 3 hour charge time
- 3.28ft high quality USB-C cable included

BATTERY 3.7v 1100mAh Li-ion

WEIGHT 3.7oz

DIMENSIONS folded 5.79 x 1.32 x 0.87in / extended 10.99 x 1.32 x 0.87in

LUMEN 425LM | **RUNTIME** 3-6.5H | **BEAM** 102FT | **IP RATING** IP20/IK07



IL-925R | FOLDING INSPECTION LIGHT

- 925 lumen white COB LED, 6500k
- Secondary rear 475 lumen white COB LED, 6500k
- Extra top torch - 150 lumen SMD LED, 6500k
- Compact hand-held size
- Super tough aluminum & nylon construction
- 180° vertical folding head
- Super strong magnetic base
- Smart Memory Switch - remember last mode used
- IK07 shock resistant - 6.5ft/2m drop resistant
- IP54 dust & water resistant
- High quality 2600mAh li-ion battery
- Battery level & charging indicators
- Fast 1A USB-C charging - 4 hour charge time
- 3.28ft high quality USB-C cable included

BATTERY 3.7v 2600mAh Li-ion

WEIGHT 6.8oz

DIMENSIONS folded 6.38 x 1.57 x 1.14in / extended 11.97 x 1.30 x 1.14in

LUMEN 925LM | **RUNTIME** 2.5-9H | **BEAM** 134.5FT | **IP RATING** IP54/IK07



INSPECTION LIGHTS



PL-3 | INSPECTION PENLIGHT

- 275 lumen white SMD LEDs, 6500k
- Die cast aircraft grade aluminum construction
- Easy press rubberized micro-switch
- 3 Light mode settings
- Strong magnetic base
- Useful rear aluminum pocket clip
- IPX4 water resistant
- 1m drop resistant

BATTERY 3 x 1.5v AAA Alkaline Batteries (inc.)
WEIGHT 2.01oz (without batteries)
DIMENSIONS 6.06 x 0.59 x 0.85in

LUMEN 275LM | **RUNTIME** 3-16H | **BEAM** 75.4FT | **IP RATING** IPX4



K-550 | COMPACT MINI WORK LIGHT

- 550 Lumen 5.7W white 6500K COB LED
- Press & Hold Turbo mode with additional red modes - 6 different lighting modes
- Ultra tough nylon & polycarbonate construction
- Super compact and lightweight size
- 160° Rotating stand with strong magnet
- Smart Memory Switch - remember last mode used
- Glow-in-the-Dark strip around led
- Comes with a carabiner and handy storage bag
- IPX6 water proof
- Powerful 3.7v 1200mAh li-polymer battery
- Useful battery level & charging indicators
- Fast 1A USB-C charging - 1.5 hour charge time
- 12 inch USB-C charging cable included

BATTERY	3.7v 1200mAh Li-po
WEIGHT	2.61oz
DIMENSIONS	2.13 x 1.10 x 2.36in

**550 lumen is Turbo mode and operates by 'press & hold' switch with 1 hour total runtime. High mode is 375 lumen with 3 hour runtime.*

LUMEN 550LM | RUNTIME 1*-28H | BEAM 95FT | IP RATING IPX6



WORK LIGHTS



SLR-1450 | COMPACT ROTATING WORK LIGHT

- 1450 lumen white COB LED, 6500k
- With 150 lumen 6500k white LED flashlight
- Plus 45 lumen Red and Red flash modes
- Powerful 'LG' 3.7v 5000mAh 21700 Li-ion battery
- Super tough copolymer and aluminum construction
- 180° rotating handle/stand with carabiner snap hook
- Strong magnets within the stand
- Glow-in-the-Dark strip for extra visibility
- Battery level and charging indicators
- Faster 2A USB-C charging - 3 hour charge time
- 1m high quality USB-C cable included
- Battery can be removed so a convenient spare can be kept at hand
- 21700 battery has its own USB-C port so is easily charged out of the lamp

BATTERY 3.7v 5000mAh 21700 Li-ion

WEIGHT 10.16oz

DIMENSIONS folded H 4.82 x W 1.99 x D 1.99in / extended H 8.62 x W 1.99 x D 1.97in

LUMEN 1450LM | **RUNTIME** 3-90H | **BEAM** 164FT | **IP RATING** IPX5



SLR-1750 | WORK LIGHT WITH POWERBANK

- 1750 lumen white COB LED, 6500k
- Red LED modes for emergency / signalling / night vision
- Built-in USB power bank with multiple intelligent outputs - 5V-3A/9V-2A/12V-1A
- Super tough copolymer and aluminum construction
- 180° rotating handle/stand with carabiner snap hook
- Strong magnets within the stand
- Glow-in-the-Dark strip for extra visibility
- Super high power 'LG' 10,400mAh battery
- Battery level and charging indicators
- Faster 4 - 4.5 hour USB-C charging with multiple inputs - 5V-3A/9V-2A
- 1m high quality USB-C cable included

BATTERY 3.7v 10,400mAh Li-ion

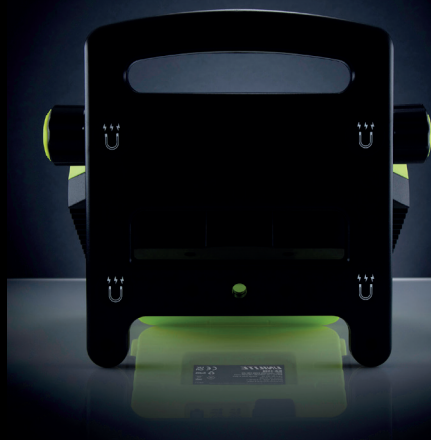
WEIGHT 21.16oz

DIMENSIONS folded - 4.01 x 6.22 x 2.16in / extended - 4.01 x 10.55 x 1.89in

LUMEN 1750LM | **RUNTIME** 4.5-195H | **BEAM** 164FT | **IP RATING** IPX5



SITE LIGHTS



SLR-5500 | RECHARGEABLE SITE LIGHT

- 5500 lumen 50W white SMD LEDs, 6500k
- High power 7.4v 7500mAh Li-ion battery
- Removable battery with powerful 2A USB power bank
- With battery level and charging indicators
- Tough aluminium & polycarbonate construction
- Glow-in-the-Dark strip around reflector for extra visibility
- Built-in aluminum heat sink
- Anti-slip rubber grip handle
- Adjustable head to change light angle
- Acrylic LED diffuser for even light dispersion
- Super strong magnetic base
- Mains 12V 2A multi-country charger/power lead included (inc UK, EU, US & AU adaptors)
- 4-5 hours charge time

BATTERY 7.4v 7500mAh Li-ion Battery Pack

WEIGHT 77.60oz

DIMENSIONS 8.46 x 7.56 x 11.22in

LUMEN 5500LM | RUNTIME 3-6H | BEAM 177FT | IP RATING IP54



SITE LIGHTS



MTB-5300 | MULTI BATTERY HYBRID SITE LIGHT

- 5300 lumen 50W 6500K COB LED
- Dual Power - rechargeable & mains powered
- Takes up to 20V 6.0Ah batteries from Milwaukee, DeWalt, Makita & Metabo - 4 adapters included
- Secure battery compartment cover (note: larger 6.0Ah batteries may need to be used without cover)
- Super tough heavy duty nylon construction
- Easy carry rubber grip handle
- Rotating stand with holes for attaching tripod/magnet
- 4 x dim settings: 650 / 1350 / 2700 / 5300 lumen
- Smart Memory Switch - remember last mode used
- Safety automatic switch-over from mains to battery in the event of power failure
- 2A USB Powerbank - works with any battery Installed
- 4 x Battery level & charging indicators
- Comes with 16ft/5m heavy duty 24V-2.7A H05RN-F charger/power lead (includes UK, EU, US & AU plugs)
- Unilite 14.8V 5.2Ah battery available to purchase separately (NOTE: Only Unilite battery can be charged via the lamp)

BATTERY Not included, bare tool

WEIGHT 44.09oz

DIMENSIONS 9.37 x 10.12 x 7.13in

NOTE: runtimes based on the Unilite 14.8V 5.2Ah battery. Other batteries will vary runtime.

LUMEN 5300LM | **RUNTIME** approx 2.5-16H | **BEAM** 312FT | **IP RATING** IP65/IK07



HEADTORCHES



PS-HDL2 | HELMET HEADTORCH

- 200 lumen white CREE LED, 6500k
- 4 main functions - HIGH / MED / LOW / SOS FLASHING
- 3 auxiliary function - HIGH / LOW / STROBE FLASHING
- Easy push micro switch
- Ultra-smooth reflector for long distance beamt
- 45° pivoting/rotating head
- Strong ABS housing
- Fully adjustable non-slip silicone headband
- 3M VHB adhesive helmet mount (included)
- 1m impact resistant
- IPX6 water resistant

BATTERY 3 x 1.5v AAA Energizer Alkaline Batteries (inc.)

WEIGHT 3.10oz (with batteries)

DIMENSIONS headtorch 1.85 x 2.44 x 1.46in

LUMEN 200LM | **RUNTIME** 5-185H | **BEAM** 312FT | **IP RATING** IPX6



HL-4R | USB HELMET HEADTORCH

- 275 lumen white CREE LED, 6500k
- 2 x 5mm red LEDs for night vision - ON and FLASHING
- Red-to-Green charging indicator
- Easy push micro switch
- 45° pivoting/rotating head
- Strong ABS housing
- Fully adjustable non-slip silicone headband
- 3M VHB adhesive helmet mount (included)
- 1m impact resistant
- Fast 1A USB-C charging - 2.5 hour charge time
- 3.28ft USB-C charging cable included

BATTERY 3.7v 1800mAh Li-Polymer
WEIGHT 2.75oz
DIMENSIONS headtorch 2.48 x 1.57 x 1.65in

LUMEN 275LM | **RUNTIME** 6.5-170H | **BEAM** 311FT | **IP RATING** IPX5



HEADTORCHES



HL-8R | DUAL BEAM SENSOR HEADTORCH

- 475 lumen white SMD LEDs, 6500k
- 2 x Side SMD LEDs for wide flood lighting
- 250 lumen SMD LED for long distance spot beam
- Sensor mode for hands-free operation
- Super tough construction with rubberized coating
- IK07 shock resistant
- IP65 dust & water resistant
- 1m impact resistant
- 60° pivoting/rotating head

- Fully adjustable non-slip silicone lined headband
- Red-to-Green charging indicator light
- Fast 1A USB-C rechargeable - 2.5 hours charge time
- 3.28ft USB-C charging cable included

BATTERY 3.7v 1500mAh Li-Polymer
WEIGHT 3.92oz
DIMENSIONS headtorch 1.87 x 3.09 x 1.81in

LUMEN 475LM | **RUNTIME** 4-35H | **BEAM** 295FT | **IP RATING** IP65/IK07



NL-350R | RECHARGEABLE NECK LIGHT

- High quality 350 lumen 6500k white SMD LEDs
- Super lightweight, adjustable and comfortable
- 2 light heads can be adjusted independently
- Super tough polycarbonate & ABS construction
- Up to 120° wider lighting angle
- IK07 Shock proof - 2m drop resistant
- IP54 Dust & water resistant
- Circuit protection prevents battery from over-charging or over-discharging
- High quality 3.7v 700mAh Li-ion battery
- 3 colour LED battery level indicator
- Charging indicator - Green flash: Charging / Green: Fully Charged
- Low battery 3x warning flash - reminds when charging is needed
- USB-C charging cable included - quick 2.5 hour charge time

BATTERY	3.7v 700mAh Li-ion
WEIGHT	4.94oz
DIMENSIONS	9.05 x 5.90 x 0.90in

LUMEN 350LM | RUNTIME 2-10H | BEAM 148FT | IP RATING IP54/IK07



FLASHLIGHTS



FR-400 | RIGHT ANGLE USB FLASHLIGHT

- High quality 400 lumen white LED, 6500k
- Hard anodized die cast matte aluminum body
- Head rotates to 90-degree angle
- Useful pocket clip and strong magnetic base
- Rubberized easy press side switch
- 2 light mode settings
- Frosted lens for smoother beam spread
- IP65 dust and water resistant
- Impact resistant to 2m
- Built-in rubberized USB-C charging port
- Battery level and charging indicator under the switch
- Circuit Protection prevents battery from over-charging or over-discharging
- Fast 1A USB-C charging - 2.5 hour charge time
- High quality USB-C charging cable inc. (1.64ft)

BATTERY 3.7v 750mAh 10900 Li-ion (inc.)
WEIGHT 3.17oz (with Li-ion battery) / 2.43oz (without battery)
DIMENSIONS Extended length 6.36 x Ø 0.75 x Ø 0.67in

LUMEN 400LM | **RUNTIME** 2-8H | **BEAM** 197FT | **IP RATING** IP65



FR-1200 | DUAL POWER RIGHT ANGLE FLASHLIGHT

- High quality 1200 lumen white LED, 6500k
- Hard anodized die cast matte aluminum body
- Head rotates to 90-degree angle
- Useful pocket clip and strong magnetic base
- Rubberized easy press side switch
- 3 light mode settings
- Flawless smooth reflector for long distance beam
- IP65 dust and water resistant
- Impact resistant to 2m
- Built-in rubberized USB-C charging port
- Battery level and charging indicator under the switch
- Circuit Protection prevents battery from over-charging or over-discharging
- Fast 1A USB-C charging - 2.5 hour charge time
- High quality USB-C charging cable inc. (1.64ft)
- Can also work with 2 x CR123A lithium batteries (not inc.)

BATTERY 3.6v 2600mAh 18650 Li-ion (inc.) / or 2 x CR123A batteries (not inc.)

WEIGHT 7.37oz (with li-ion battery) / 5.68oz (without battery)

DIMENSIONS Extended length 6.32 x Ø 1.18x Ø 1.06in

LUMEN 1200LM | RUNTIME 3-14H | BEAM 590FT | IP RATING IP65



FLASHLIGHTS



F-1400 | DUAL POWER ALUMINUM FLASHLIGHT

- High quality 1400 lumen white LED, 6500k
- Hard anodized die cast matte aluminum body
- Tactical rubberized tail switch
- 4 light modes and 8Hz defence strobe
- Flawless smooth reflector for long distance beam
- IP68 dust and waterproof - 1m submersible
- Impact resistant to 2m
- Built-in concealed USB-C charging port
- Battery level and charging indicator LED
- Circuit Protection prevents battery from over-charging or over-discharging
- Fast 1A USB-C charging - 2.5 hour charge time
- High quality USB-C charging cable inc. (19inch)
- Can also work with 2 x CR123A lithium batteries (not inc.)
- Safety nylon wrist strap included

BATTERY 3.6v 2600mAh 18650 Li-ion (inc.) / or 2 x CR123A batteries (not inc.)

WEIGHT 5.54oz (with li-ion battery) / 3.84oz (without battery)

DIMENSIONS 5.51 x Ø 1.18x Ø 0.98in

LUMEN 1400LM | **RUNTIME** 2.5-23H | **BEAM** 590FT | **IP RATING** IP68



F-2700 | USB ALUMINUM FLASHLIGHT

- Super bright 2700 lumen white LED, 6500k
- Hard anodized die cast matte aluminum body
- Tactical rubberized tail switch
- 4 light modes and 8Hz defence strobe
- Flawless smooth reflector for long distance beam
- IP68 dust and waterproof - 1m submersible
- Impact resistant to 2m
- Built-in concealed USB-C charging port
- Battery level and charging indicator LED
- Circuit Protection prevents battery from over-charging or over-discharging
- Fast 2A USB-C charging - 3 hour charge time
- High quality USB-C charging cable inc. (0.5m)
- Safety nylon wrist strap included

BATTERY	3.6v 5000mAh 21700 Li-ion (inc.)
WEIGHT	7.40oz (with li-ion battery) / 4.87oz (without battery)
DIMENSIONS	6.02 x Ø 1.30x Ø 1.10in

LUMEN 2700LM | **RUNTIME** 3-45H | **BEAM** 980FT | **IP RATING** IP68



INTRINSICALLY SAFE



ATEX-FL4 | ZONE 0 INTRINSICALLY SAFE FLASHLIGHT

- 150 lumen white CREE LED, 6500k
- ATEX Zone 0 gas compliant
- Safety release valve to release hydrogen gases
- Chemical and corrosion resistant
- Rubberized head & handle for greater durability
- Industrial strength polycarbonate housing
- Detachable pocket clip included for hands free use
- Polycarbonate lens and smooth reflector for long distance beam
- Safety locking battery compartment
- Optional brackets available for helmets
- IP67 dust and waterproof
- 3m/9.84ft submersible

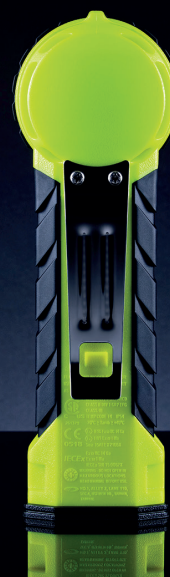
BATTERY 4 x 1.5v AA Alkaline Batteries (not inc.)
WEIGHT 4.05oz (without batteries)
DIMENSIONS 6.85 x 1.85 x 1.85in



LUMEN 150LM | RUNTIME 6-69H | BEAM 771FT | IP RATING IP67



INTRINSICALLY SAFE



ATEX-RA2 | ZONE 0 INTRINSICALLY SAFE RIGHT ANGLE TORCH

- 350 lumen white CREE LED, 6500k
- ATEX Zone 0 gas compliant
- Suitable for mining
- Safety release valve to release hydrogen gases
- Chemical and corrosion resistant
- Ultra strength polycarbonate housing
- Rubberized head and grips for durability
- Convenient rear stainless steel pocket clip
- Safety locking battery compartment
- Easy push micro switch operation
- IP54 dust and water resistant

BATTERY 4 x 1.5v AA Alkaline Batteries (not inc.)
WEIGHT 8.82oz (without batteries)
DIMENSIONS 7.20 x 2.72 x 2.48in



LUMEN 350LM | **RUNTIME** 6.5-13H | **BEAM** 945FT | **IP RATING** IP54



INTRINSICALLY SAFE



ATEX-H2 | ZONE 0 INTRINSICALLY SAFE HEADTORCH

- 225 lumen white CREE LED, 6500k
- ATEX Zone 0 gas compliant
- Safety release valve to release hydrogen gases
- Strong ABS housing with durable synthetic rubber coating
- Safety locking battery compartment
- Easy press rubberized switch
- 2 mode light settings
- 90° pivoting/rotating head
- Silicone lined non-slip headband included
- IP67 dust and waterproof
- 1m/3.28ft submersible

BATTERY 3 x 1.5v AAA Alkaline Batteries (not inc.)
WEIGHT 4.58oz (without batteries)
DIMENSIONS headtorch 3.15 x 1.97 x 1.77in



LUMEN 225LM | RUNTIME 5-12H | BEAM 377FT | IP RATING IP67



ES-6 | HEAVY DUTY 6" ELECTRICIANS SCISSORS

- Ultra tough 6" professional electricians scissors (160mm)
- Whole steel frame for high resistance & durability
- Industrial strength polypropylene handles
- With full TPR coating for superior grip & comfort
- High grade 4034 Japanese stainless steel 0.157in/4.0mm thick polished blades with 1.57in/40mm cutting edge
- Black 'DLC' (diamond-like-carbon) coating on blades for extra sharpness
- High hardness blades (58 \pm 2 HRC) with anti-slip serrated edge
- 2.5mm² & 1.5mm² wire strippers & wire crimping terminal
- Notch in the blades for cutting/stripping 50mm² cable
- Includes heavy duty nylon clip-on belt sheath
- Suitable for cutting aluminum, copper and soft cable

WEIGHT 5.40oz | **DIMENSIONS** Length: 6.30in | Blade Length: 1.57in



UTILITY KNIVES



FK3 | HEAVY DUTY FOLDING UTILITY KNIFE

- Heavy duty folding utility knife
- High-carbon 3Cr13 stainless steel blade
- 'Clip point' blade with serrated edge and tapered spine swedge
- Blade spine includes thumb rise for extra grip
- Blade hardness 52-54 HRC
- Assisted one-handed opening with thumb studs
- Easy to operate one-handed 'Liner lock' mechanism
- Ultra tough ergonomic aluminum handle with front Quillion finger guard
- Pocket clip for easy carrying
- Hole in the handle for adding a lanyard

WEIGHT 4.21oz | **DIMENSIONS** Length: 7.80in



UTILITY KNIVES



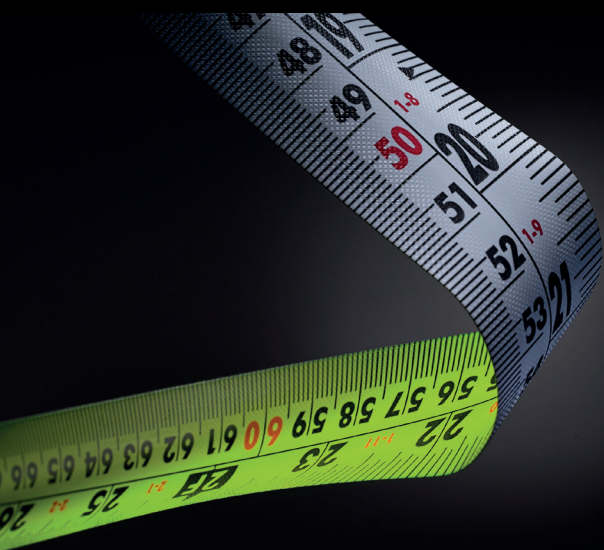
EK4 | HEAVY DUTY FOLDING UTILITY KNIFE

- Heavy duty folding utility knife
- High-carbon 3Cr13 stainless steel blade
- 'Drop point' blade with serrated edge and tapered spine swedge
- Blade spine includes thumb rise for extra grip and 2 wire stripper notches
- Assisted one-handed opening with thumb studs
- Blade hardness 52-55 HRC
- Ultra tough ergonomic aluminum handle with front Quillion finger guard
- Easy to operate one-handed 'Framelock' mechanism
- Pocket clip for easy carrying

WEIGHT 4.76oz | **DIMENSIONS** Length: 7.68in



TAPE MEASURES



MT5M2 | HEAVY DUTY TAPE MEASURE

- Heavy duty 16ft/5m tape measure with 1.06in/27mm wide blade
- Ultra high performance nylon coated SUPERBLADE - 5 x extended life
- 9.5ft/2.9m high stand-out blade
- SUPERBLADE withstands durability tests of falling sand particles with 60 litres of salt spray for 100 hours
- Magnetic triple riveted stainless steel dual hook with 1kg suction
- Dual colour double sided imperial & metric blade
- Durable rear pocket clip - wont detach even if screw loosens
- Powerful push lock secures the blade
- Superior internal mechanism provides smooth operation
- Impact resistant TPR covered ABS casing
- Drop tested from 29.ft/9m

WEIGHT 11.36oz | **DIMENSIONS** H 3.01 x W 3.11 x D 2.04in



		S/7	M/8	L/9	XL/10	XXL/11
Longest finger length to cuff	Inches	9	9 ½	10	10 ¼	10 ½
	CM	22.5	24	25	26	27
Palm width at the Knuckles	Inches	3 ¼	3 ½	3 ½	4	4
	CM	8.5	8.75	9	10	10.5

there may be variances in measurements due to hand cutting & stitching

UG-12C4 | HEAVY DUTY CUT-D IMPACT GLOVES

- Cut resistant gloves with full dorsal TPR impact protection
- Flexible lightweight design, TPR weighs less than 60g
- Heavy duty 15-Gauge high-performance polyethylene (HPPE) yarn interwoven with steel and glass fibers for added strength and high cut resistance
- Sandy nitrile half-dip coating offers excellent grip
- TPR is sonic welded to the glove for greater longevity
- Adjustable TPR velcro wrist strap for secure fit
- Synthetic leather stitched cuff for extra durability
- Touch screen technology
- EN388 mechanical hazard protection: 4X42DP - cut level D
- ANSI/ISEA 138 impact resistant level 2
- ANSI cut resistant level A4
- Available in 5 sizes - 7/S, 8/M, 9/L, 10/XL & 11/XXL.

EN388



4X42DP

ANSI



CUT

ANSI/ISEA 138



CERTIFICATIONS EN ISO 21420:2020 | EN388:2016+A1:2018 | ANSI/ISEA 2016 | ANSI/ISEA138:2019



SG-Y10 | SAFETY GLASSES WITH INDOOR/OUTDOOR LENSES

- Super tough flexible nylon-polymer frame
- 8-Base curved toughened polycarbonate lenses
- Toughened polycarbonate lenses
- Indoor & outdoor mirror lens coating
- With 99% UV A/B/C protection (EN170)
- Anti-scratch & anti-fog lens coatings
- Flexible PC & TPR co-injected side arms
- Rubberized TPR inner arm grips
- TPR non-slip nose grip with reinforced bridge
- Side TPR temple shields with ventilation
- Micro-fiber drawstring storage bag included

LENS MARKINGS

- Lens Filters: 2 (UV EN170) 1.4 (Indoor & Outdoor)
- Optical Class: 1 (high optical quality)
- Lens Coatings: Standard Anti-Scratch & Anti-Fog
- Mechanical risk - Low energy impact - F
- High speed particles at extreme temperatures - T

WEIGHT 1.81oz



CERTIFICATIONS CE - EN166 | USA - ANSI Z87.1 | AUS/NZ - AS/NZS 1337.1



SG-YFG | SAFETY GLASSES WITH CLEAR LENSES & FOAM GASKET

- Tough flexible polycarbonate frame
- 8-Base curved toughened polycarbonate clear lenses
- Hytrel black back frame with EVA foam gasket
- K & N anti-scratch & anti-fog lens coatings
- 99% UV A/B/C protection (EN170)
- Flexible PC & TPR co-injected side arms
- With side temple ventilation
- Adjustable TPR non-slip nose pads
- Reinforced nose bridge
- Micro-fiber drawstring storage bag included

LENS MARKINGS

- Lens Filters: 2C (UV EN170) 1.2 (Clear)
- Optical Class: 1 (high optical quality)
- Lens Coatings: Anti-Scratch - K Anti-Fog - N
- Mechanical risk: Low energy impact - F
- High speed particles at extreme temperatures - T

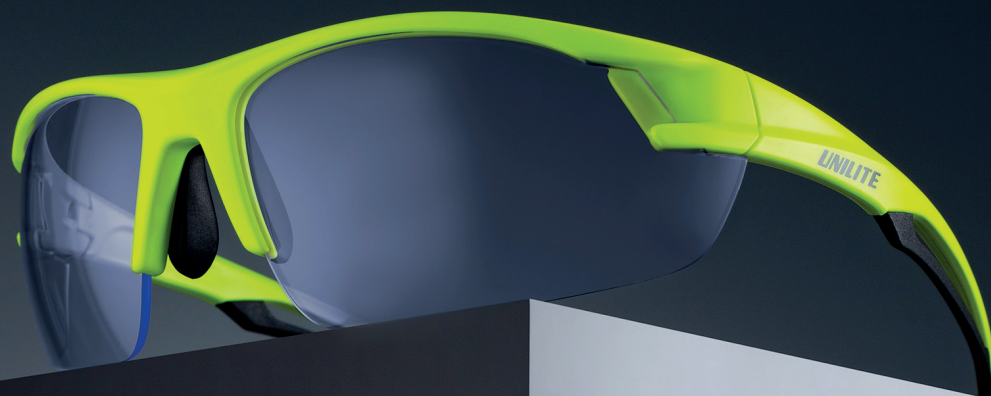
WEIGHT 1.39oz



CERTIFICATIONS CE - EN166 | USA - ANSI Z87.1 | AUS/NZ - AS/NZS 1337.1



SAFETY GLASSES



SG-YCB | SAFETY GLASSES WITH CLEAR BLUE LIGHT LENSES

- Tough flexible polycarbonate frame
- 8-Base curved toughened polycarbonate lenses
- Clear 420Cut blue light blocking lenses
- Blocks harmful HEV blue light up to 420nm
- K & N anti-scratch & anti-fog lens coatings
- 99% UV A/B/C protection (EN170)
- Flexible PC & TPR co-injected side arms
- Adjustable rubberized non-slip nose pads
- Reinforced nose bridge
- Micro-fiber drawstring storage bag included

LENS MARKINGS

- Lens Filters: 2C (UV EN170) 1.2 (Clear)
- Optical Class: 1 (high optical quality)
- Lens Coatings: Anti-Scratch - K Anti-Fog - N
- Mechanical risk: Low energy impact - F
- High speed particles at extreme temperatures - T

WEIGHT 1oz



CERTIFICATIONS CE - EN166 | USA - ANSI Z87.1 | AUS/NZ - AS/NZS 1337.1



SG-YDS | SAFETY GLASSES WITH DARK SMOKE LENSES

- Tough flexible polycarbonate frame
- 8-Base curved toughened polycarbonate lenses
- Dark smoke lens tinting
- K & N anti-scratch & anti-fog lens coatings
- 99% UV A/B/C protection (EN172)
- Flexible PC & TPR co-injected side arms
- Side temple ventilation
- Adjustable rubberized non-slip nose pads
- Reinforced nose bridge
- Micro-fiber drawstring storage bag included

LENS MARKINGS

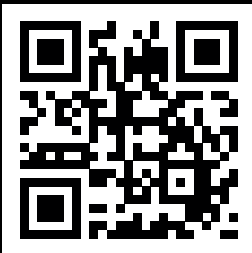
- Lens Filters: 5 (UV EN172) 2.5 (Dark Smoke)
- Optical Class: 1 (high optical quality)
- Lens Coatings: Anti-Scratch - K Anti-Fog - N
- Mechanical risk: Low energy impact - F
- High speed particles at extreme temperatures - T

WEIGHT

1oz



CERTIFICATIONS CE - EN166 | USA - ANSI Z87.1 | AUS/NZ - AS/NZS 1337.1



part of ASPEN PUMPS GROUP

Unilite USA

C&D Valve
201 NW 67th St,
Oklahoma City, OK 73116
United States

T: 800-654-9233

E: sales@cdvalve.com

EN/US ISSUE 1 08/24